



HYUNDAI Technical Service Bulletin

Group	CAMPAIGN
Number	08-01-023-1
Date	DECEMBER, 2008
Model	2009 AZERA

Subject
**2009 AZERA INSPECTION CAMPAIGN
 (SERVICE CAMPAIGN T68)**

CIRCULATE TO:	<input type="checkbox"/> GENERAL MANAGER	<input checked="" type="checkbox"/> PARTS MANAGER	<input checked="" type="checkbox"/> TECHNICIAN
<input checked="" type="checkbox"/> SERVICE ADVISOR	<input checked="" type="checkbox"/> SERVICE MANAGER	<input checked="" type="checkbox"/> WARRANTY MGR	<input type="checkbox"/> SALES MANAGER

This TSB has been reissued to make changes to step 12.

IMPORTANT: THIS CAMPAIGN APPLIES TO DEALER STOCK VEHICLES ONLY.

IMPORTANT: DEALERS MUST PERFORM THIS CAMPAIGN ON ALL AFFECTED VEHICLES PRIOR TO CUSTOMER RETAIL DELIVERY. ACCESS HYUNDAI MOTOR AMERICA'S "WARRANTY VEHICLE INFORMATION" SCREEN VIA WEBDCS TO IDENTIFY OPEN CAMPAIGNS.

DESCRIPTION:

This TSB provides the procedure to document tire pressure using the GDS TPMS module, conduct an evaluation drive and inspect interior cleanliness and exterior quality.

APPLICABLE VEHICLES:

Model: 2009 Azera

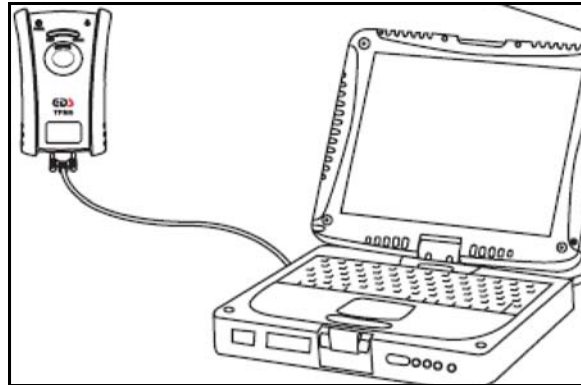
REQUIRED TOOLS:

Description	Picture
A) GDS B) Cable - USB to RS232C C) GDS TPMS Module	

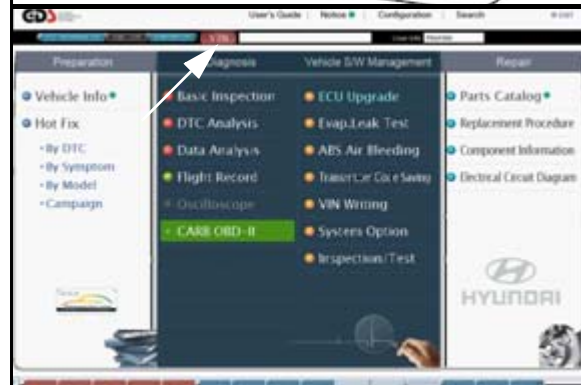
SERVICE PROCEDURE:

A. TIRE PRESSURE CONFIRMATION

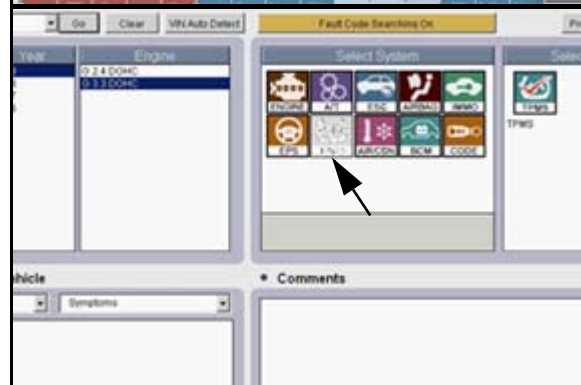
1. Connect the GDS Vehicle Communication Interface (VCI) to the DLC located under the steering wheel and turn on the VCI.
2. Connect the GDS TPMS Module to the GDS using the USB to RS232C cable and turn on the GDS TPMS Module.



3. Select the “VIN” button.



4. Select TPMS System and press the “OK” button.





HYUNDAI Technical Service Bulletin

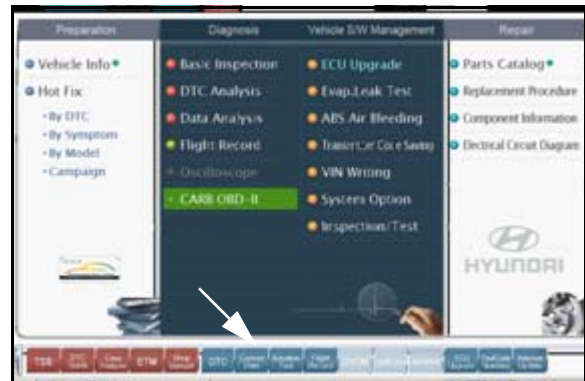
Group

CAMPAIGN

Number

08-01-023-1

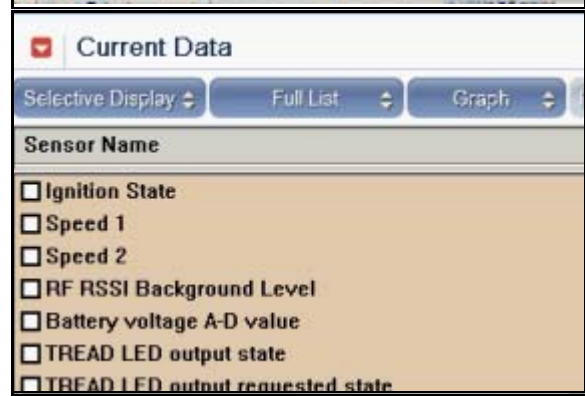
5. Select the “Current Data” tab.



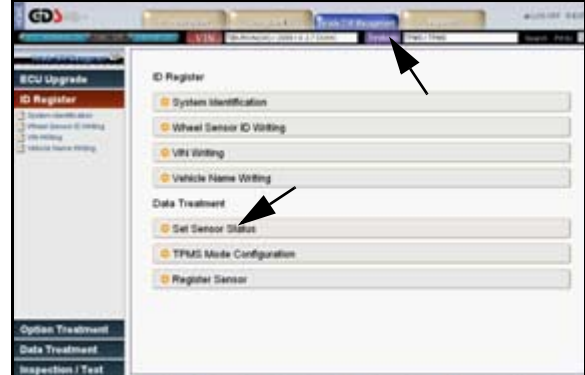
6. Using the “Current Data” display set the tire pressure on all tires to the pressure stated on the “B” pillar tire placard.

- Azera: 30 psi

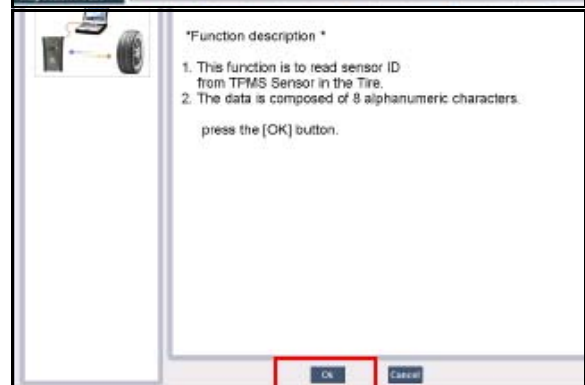
NOTE: Do not use a tire pressure gauge. Confirm the correct pressure through the GDS data.



7. After setting all four tires select the “Vehicle S/W Management” tab and select Set System Status.



8. After checking the sentence on the screen, press the “OK” button.



9. Disconnect the RS232C cable from the TPMS module then press the “OK” button after reading the instruction.

IMPORTANT: Do not disconnect the RS232C cable from the GDS USB port.

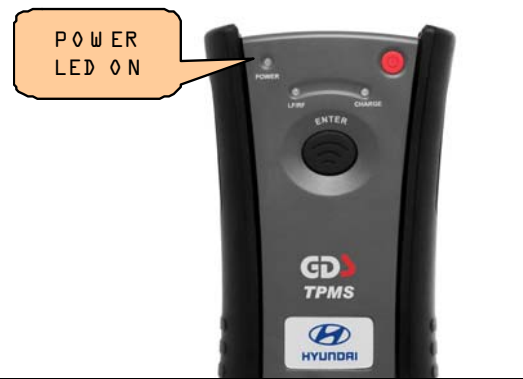
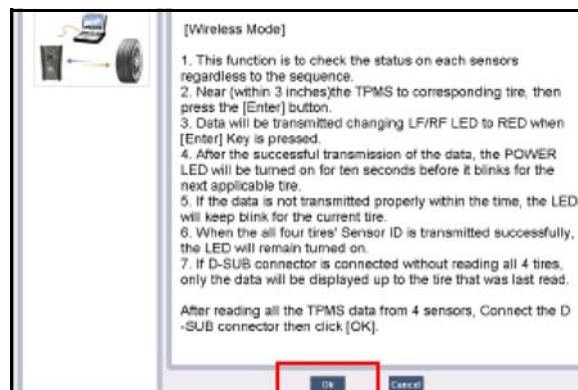
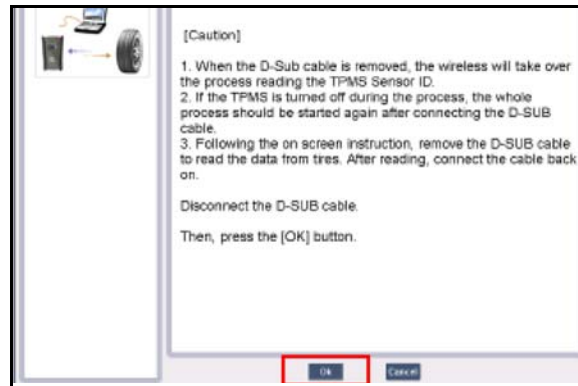
NOTE: If the TPMS module’s power is lost during this operation, charge the TPMS module until the charge LED changes to green and then go back to step 1.

10. Check the status of the TPMS sensor on the vehicle following the instruction.

NOTE: Test Order: 1) Driver Front 2) Passenger Front 3) Passenger Rear 4) Driver Rear

- Number of blinks of POWER LED means the number of the sensor that is being read. EX) Blink once: 1st sensor is ready to be read.

- Locate the GDS TPMS module near the valve stem approximately 3~4 inches (8~11cm) then press “Enter” button.





HYUNDAI Technical Service Bulletin

Group

CAMPAIGN

Number

08-01-023-1

- When “Enter” button is pressed, LF/RF LED will turn RED, then green indicating the sensor data is successfully transferred.
- When data is transferred, POWER LED will light for 10 seconds then blink the number of the following sensor that is to be read.
- The POWER LED will stay lit when all 4 sensors are read.

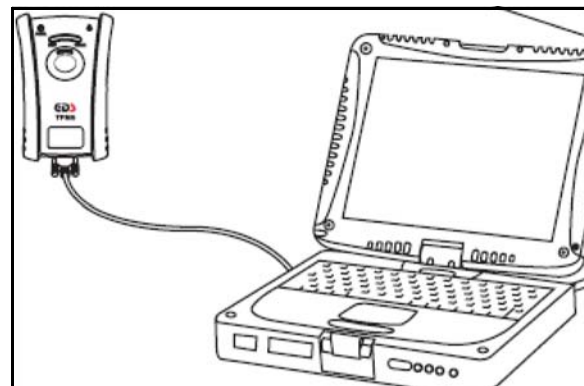


NOTE: If the data transfer is completed from the 1st sensor. POWER LED will blink twice for the 2nd sensor to be measured. If the data needs to be read again, the LED will blink once for the 1st sensor.

NOTE: If the 2nd sensor was being read and data was not properly transferred, the LED will blink twice again indicating that you must read the 2nd sensor again.

NOTE: If the D-sub cable is connected in between, only the measured data will be displayed in the screen.


11. Reconnect the GDS TPMS Module to the RS232C cable and select the “OK” button.



12. Confirm the tire pressure in the Sensor Status display.

NOTE: Print the Sensor Status display and attach to the repair order.

NOTE: Any repairs must be claimed under normal warranty procedure.



ITEM	VALUE	UNIT
ID	06704000	
Pressure	0.8	psi
Temperature	58	°F
Battery Level	OK	
Sensor Output	HIGH	
Transmission	LF 8ATWTC TM	
Tire Type	-ps	

ITEM	VALUE	UNIT
ID	80704000	
Pressure	0.2	psi
Temperature	82	°F
Battery Level	OK	
Sensor Output	HIGH	
Transmission	LF 8ATWTC TM	
Tire Type	-ps	

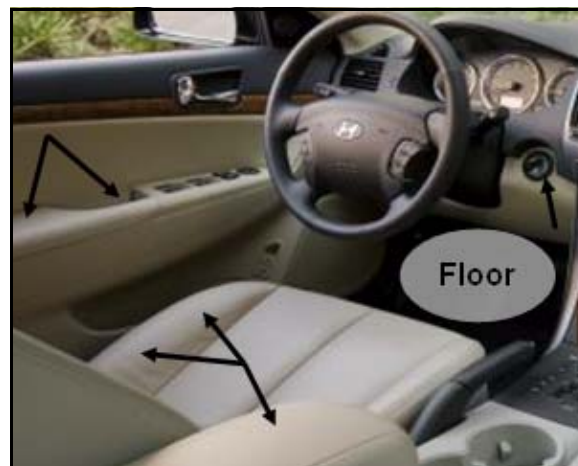
ITEM	VALUE	UNIT
ID	06706400	
Pressure	0.7	psi
Temperature	66	°F
Battery Level	OK	
Sensor Output	HIGH	
Transmission	LF 8ATWTC TM	
Tire Type	-ps	

ITEM	VALUE	UNIT
ID	80706400	
Pressure	0.2	psi
Temperature	66	°F
Battery Level	OK	
Sensor Output	HIGH	
Transmission	LF 8ATWTC TM	
Tire Type	-ps	

B. INTERIOR AND EXTERIOR INSPECTION

1. Conduct a thorough interior inspection looking for dirt, stains or contamination.
2. Driver's seat areas that need some additional inspection include the following:

- Door pull
- Armrest
- Ignition switch surround
- Floor
- Seat cushion



1. Conduct a through inspection of the black tape surrounding the front and rear side windows on the driver's and passenger's side.
2. Inspect the remaining exterior surfaces for paint imperfections or damage.

NOTE: If any repairs are required, file claims under the normal warranty procedure.





HYUNDAI Technical Service Bulletin

Group	CAMPAIGN
Number	08-01-023-1

C. DRIVE EVALUATION

1. Select a smooth level road surface on which you can drive safely up to 70 mph vehicle speed.
2. Drive the vehicle at speeds between 65 and 70 mph for four miles to warm up the tires to remove vibrations that may be caused by temporary tire flat spotting condition.
3. During the fifth mile, drive the vehicle between 65 to 70 MPH or at a speed at which maximizes any vibrations to subjectively rate the following conditions:
 - a. Steering wheel shimmy (steering wheel rotational oscillation)
 - b. Vehicle vibration (seat, floor pan, etc.)
 - c. Vehicle pull/drift to right or left
4. If any of the above conditions would be objectionable to a customer, they must be corrected prior to vehicle delivery to the customer using the following TSB procedures:
 - 08-SS-003: Tire and wheel vibration and radial force variation
 - 08-SS-004: Diagnosis and correction of vehicle pull

NOTE: If any repairs are required, file claims under the normal warranty procedure.

WARRANTY INFORMATION:

OP CODE	OPERATION	OP TIME
80B05310	Azera Inspection Campaign	0.4

NOTE: SUBMIT CLAIM ON CAMPAIGN CLAIM ENTRY SCREEN.