



HYUNDAI Technical Service Bulletin

| | |
|--------|----------------|
| Group | TRANSMISSION |
| Number | 06-40-016 |
| Date | NOVEMBER, 2006 |
| Model | ALL |

| | |
|---------|--|
| Subject | AUTOMATIC TRANSAXLE FLUID LEVEL |
|---------|--|

| | | | |
|---|---|---|--|
| CIRCULATE TO: | <input type="checkbox"/> GENERAL MANAGER | <input checked="" type="checkbox"/> PARTS MANAGER | <input checked="" type="checkbox"/> TECHNICIAN |
| <input checked="" type="checkbox"/> SERVICE ADVISOR | <input checked="" type="checkbox"/> SERVICE MANAGER | <input checked="" type="checkbox"/> WARRANTY MGR | <input type="checkbox"/> SALES MANAGER |

This TSB supersedes TSB# 03-40-019 to add new model information

DESCRIPTION:

The automatic transaxle fluid (ATF) level must be checked during Pre-Delivery Inspection (PDI). Low ATF level may cause the following driveability conditions:

- Engine “flare” during the 2-3 shift (engine speed increases during the shift) at light throttle when the ATF is cold
- Harsh or delayed shift during acceleration from a stop following a rapid deceleration

PROCEDURE:

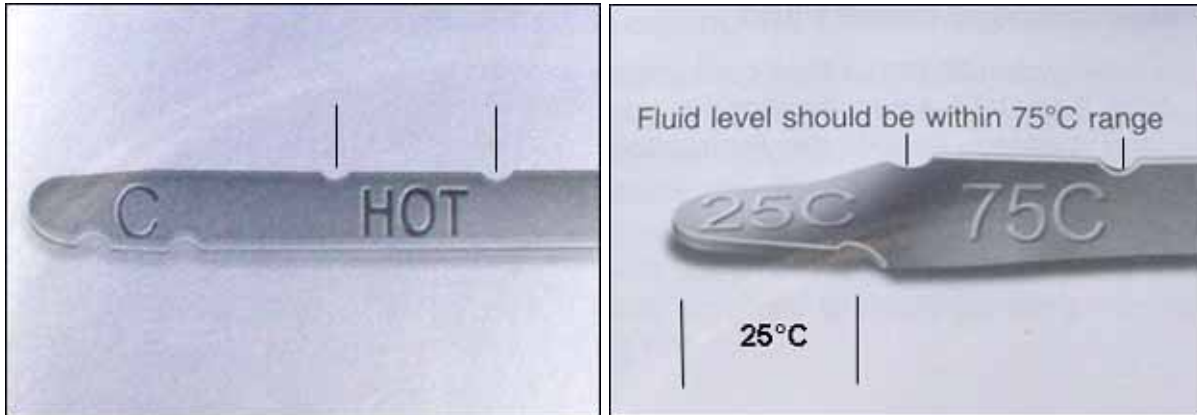
1. Attach a Hi-Scan Pro or GDS and select “Automatic Transaxle” menu, “Current Data” menu and “Fluid Temperature”.
2. Drive the vehicle until the ATF is at normal operating temperature above **75°C (167°F)**.
3. Park the vehicle on a level surface and set the parking brake. Start the engine and move the shift lever through each gear, then to “Neutral”.



4. Check the ATF level on the dipstick. Add **Hyundai SPIII** until the level is within the “HOT” or “75C” range.

NOTE: The 2008 Veracruz requires JWS 3309, Type T-IV ATF. Do not use SPIII.

NOTE: The “COLD” range is only used for estimating ATF level. The ATF level can be accurately checked only if the ATF temperature is at normal operating temperature above 75°C (167°F).



NOTE: Use only Hyundai SPIII ATF, Diamond SPIII ATF or other brands meeting the SPIII specification approved by Hyundai Motor Company.

NOTE: SPIII has a red color when new; however, the ATF may change color to a dark red or brown after 10,000 to 25,000 miles in service. This change is normal for this type of ATF and does not indicate an internal transaxle condition.

MAINTENANCE INTERVAL:

Refer to the maintenance schedule in the owner’s manuals for maintenance requirements:

| SERVICE | CHANGE ATF | COMMENT |
|---------|-------------------------|----------------------|
| NORMAL | 105,000 miles/84 months | |
| SEVERE | 30,000 miles/30 months | See definition below |

SEVERE DRIVING CONDITIONS:

- Repeated short distance driving
- Extensive idling or low speed operation
- More than 50% driving in heavy city traffic during hot weather above 90°F (32°C)
- Driving in very cold weather below 0°F (-18°C)
- Towing a trailer
- Driving in mountainous areas