



HYUNDAI Technical Service Bulletin

Group	CAMPAIGN
Number	04-01-005
Date	JUNE, 2004
Model	2002-2003 ELANTRA, 2002-2003 SONATA, 2002-2003 XG350, 2003 TIBURON

Subject	FUEL TANK ASSEMBLY VALVE INSTALLATION CAMPAIGN 066
---------	---

IMPORTANT: DEALERS MUST PERFORM THIS CAMPAIGN ON ALL AFFECTED VEHICLES PRIOR TO CUSTOMER RETAIL DELIVERY AND WHENEVER AN AFFECTED VEHICLE IS IN THE SHOP FOR ANY MAINTENANCE OR REPAIR.

IMPORTANT: WHEN A VEHICLE ARRIVES AT THE SERVICE DEPARTMENT, ACCESS HYUNDAI MOTOR AMERICA'S WARRANTY VEHICLE INFORMATION SCREEN VIA DCS INTERACTIVE OR DCS ON-LINE TO IDENTIFY OPEN CAMPAIGNS.

NOTE: Please see the last page of this TSB for the Dealer Letter.

DESCRIPTION:

Some of the vehicles affected by this campaign may contain a fuel tank assembly valve that may not close properly. This TSB provides the procedure to remedy this condition by installing an additional fuel tank assembly valve.

VEHICLES AFFECTED:

MODEL YEAR	MODEL	AFFECTED VEHICLE PRODUCTION DATE RANGE
2002-2003	Elantra	October 1, 2001 - November 9, 2002
2002-2003	Sonata	October 1, 2001 - November 9, 2002
2002-2003	XG350	October 1, 2001 - November 9, 2002
2003	Tiburon	October 1, 2001 - November 9, 2002

PARTS INFORMATION:

PART NAME	PART NUMBER	PHOTO	MODEL
Valve assembly - fuel cut	31190-38810A		Sonata, XG350
	31190-2D810A		Elantra, Tiburon

SERVICE PROCEDURE:

NOTE: Verify that the vehicle is subject to this campaign by checking the “Warranty Vehicle Information” screen via DCS Interactive or DCS Online.



HYUNDAI Technical Service Bulletin

Group

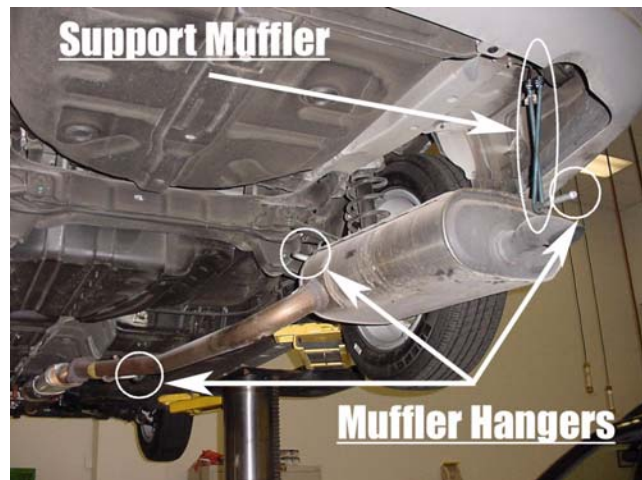
CAMPAIGN

Number

04-01-005

For Sonata and XG350 vehicles (Please see pages 8-10 for Elantra and Tiburon vehicles):

1. Raise the vehicle.
2. Remove the three muffler hangers and support the rear muffler after it has been lowered 6 inches.

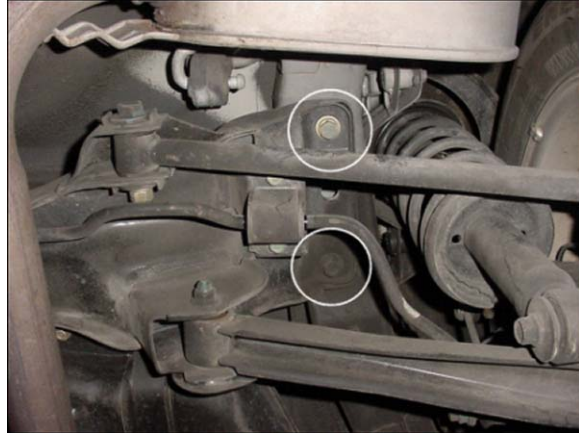


NOTE: Do not allow the muffler to hang unsupported. Do not lower the muffler more than 6 inches.



3. Remove the rear suspension crossmember mounting bolts and lower the suspension crossmember.





4. Support the fuel tank using a jack stand.



5. Remove the left rear fuel tank band nut and lower the band from the mounting stud.





HYUNDAI Technical Service Bulletin

Group

CAMPAIGN

Number

04-01-005

6. Disconnect the vapor hose from the 'Y' shaped tube.



7. Cut about 4 inches (100mm) from the end of the vapor hose as shown. Discard the 4 inch piece that you have removed.



8. Install the new valve bracket mounting hole over the fuel tank band stud and connect the cut end of the vapor hose to the lower nipple of the new valve.

NOTE: The valve must be positioned above the mounting bracket, as shown.



9. Connect the upper hose from the new valve to the 'Y' shaped tube where the vapor hose was removed.

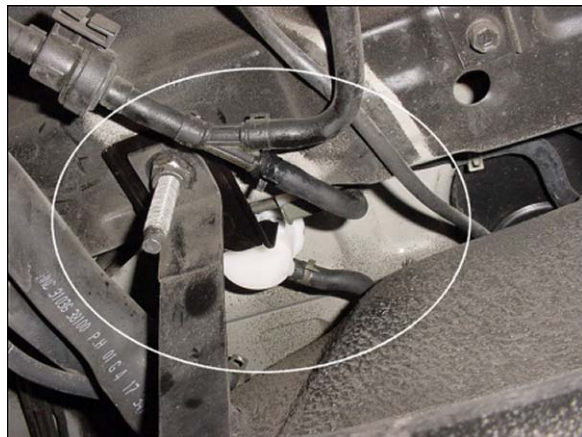


10. Install the fuel tank band over the valve bracket and tighten the nut.

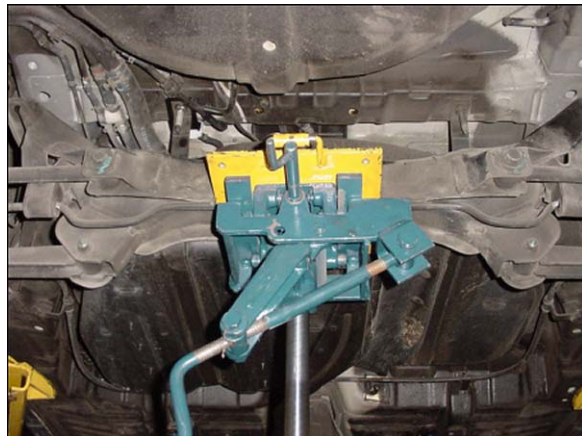
Torque Specification:

Fuel Tank Band Nut

(40-50 lb-ft, 54-68 Nm, 550-690 kg-cm)



11. Support the rear suspension using a crossmember jack. Carefully raise the suspension being sure not to make contact with the fuel tank. Tighten the four suspension mounting bolts after aligning the bolt holes and torque to specification.





HYUNDAI Technical Service Bulletin

Group

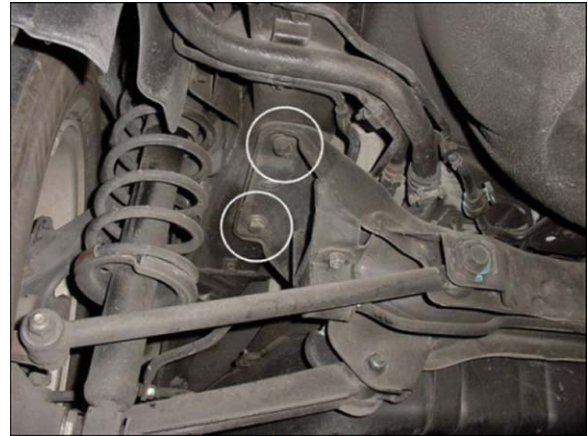
CAMPAIGN

Number

04-01-005

Torque Specification:

Rear crossmember to body mounting bolt
(74-88 lb-ft, 100-120Nm, 1000-1200kg-cm)



12. Reinstall the rear muffler.
13. Lower vehicle.

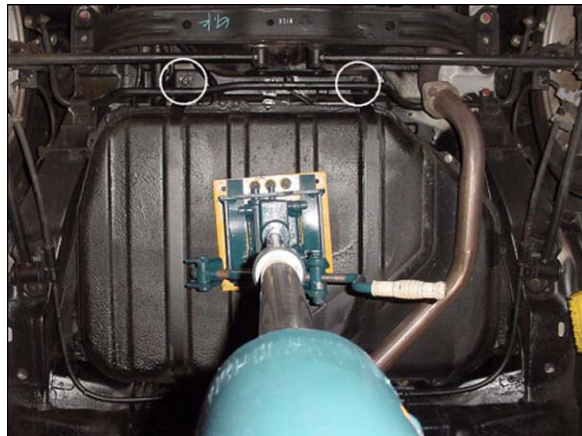


For Elantra and Tiburon vehicles (Please see pages 3 - 7 for Sonata and XG350 vehicles):

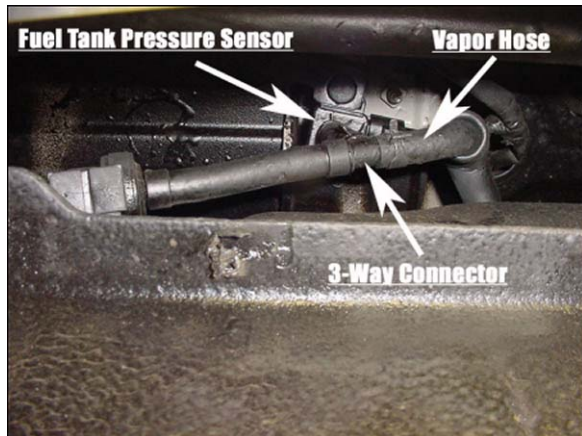
1. Raise the vehicle.



2. Support the fuel tank using a jack stand and remove the rear fuel tank band nuts and lower the bands from the mounting studs. Using the jack, lower the fuel tank about 4 inches (100 mm) to obtain working space.



3. Disconnect the vapor hose in between the valve and the 3 way connector.





HYUNDAI Technical Service Bulletin

Group

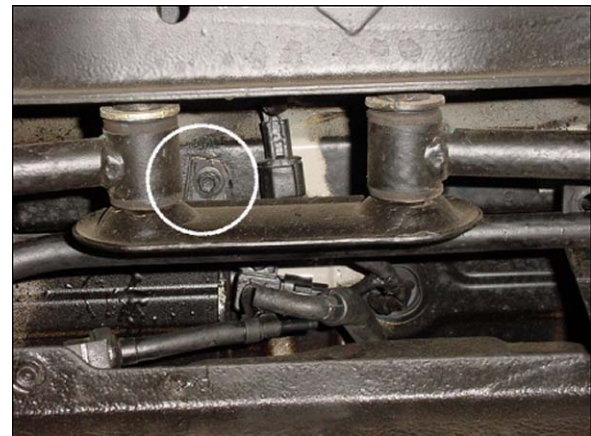
CAMPAIGN

Number

04-01-005



4. Remove the fuel tank pressure sensor mounting bracket bolt.



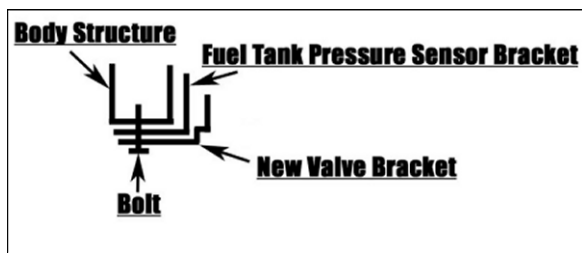
5. Install the vapor hose disconnected in step 3 to the lower nipple of the new valve.



- Connect the upper hose from the new valve to the 3 way connector.



- Install the fuel tank pressure sensor bracket to the body structure with the new valve bracket below it and tighten the bolt.



- Raise the fuel tank and install the fuel tank bands and nuts.

Torque Specification:

Fuel Tank Band Nut

(40-50 lb-ft, 54-68 Nm, 550-690 kg-cm)



- Lower the vehicle.

CAMPAIGN CLAIM INFORMATION:

MODEL	OP CODE	OPERATION	OP TIME
Sonata	41B006R0	Fuel Cut Valve Installation	0.5 M/H
XG350			
Elantra	41B006R1		0.4 M/H
Tiburon			

NOTE: Submit claims using the Campaign Claim Screen.

June 28, 2004

**TO: ALL HYUNDAI DEALER PRINCIPALS:
ALL HYUNDAI DEALERSHIP SERVICE MANAGERS:
ALL HYUNDAI DEALERSHIP PARTS MANAGERS:**

Subject: Recall Campaign 066 – Fuel Tank Assembly Valve Installation

Hyundai Motor America is conducting a Recall Campaign on certain 2002 and 2003 Elantra, Sonata, XG350, and Tiburon models, produced beginning October 1, 2001 through November 9, 2002, in order to install a fuel tank assembly valve.

Some of the vehicles affected by this campaign may contain a fuel tank assembly valve that may not close properly. Campaign 066 provides a procedure to remedy this condition by installing an additional fuel tank assembly valve.

In order to identify only those vehicles affected by Recall Campaign 066, it will be necessary to access Hyundai Motor America's "Warranty Vehicle Information" screen via DCS Interactive or DCS On-line before a repair is started. The "Warranty Vehicle Information" screen will identify affected vehicles with an open Campaign 066.

Technical Service Bulletin (TSB) #04-01-005 will be available on Hyundai's Website, www.hmaservice.com, June 28, 2004. The TSB will provide the installation procedure. In addition, the TSB will provide the claim submission procedure for dealer reimbursement. Installation time for the fuel tank assembly valve will vary depending upon the model.

PLEASE NOTE: Starting the week of June 28, 2004, all dealers will automatically be shipped an initial supply of the Fuel Tank Assembly Valves in their weekly parts shipment. **It is not necessary for dealerships to place an initial order.** When your dealership needs additional parts, they may be ordered through the regular parts system.

Enclosed with the Service Manager's letter will be five (5) Technical Service Bulletins, a copy of the Customer Notification Letter, and a VIN listing of any dealer in-stock vehicles and retail customers affected by this campaign.

On June 30, 2004, ten weekly mailings of customer notification letters will begin.

It is IMPORTANT TO SUBMIT A CAMPAIGN CLAIM FOR EACH VEHICLE REPAIRED so your dealership can be compensated for your work and so Hyundai can maintain accurate records of campaign completions.

LEGAL LIABILITY NOTICE: You are required to keep confidential any and all information and documents provided to you by Hyundai Motor America in the conduct of carrying out work for this campaign. Hyundai Motor America dealers may use such owner information for the sole purpose of conducting and performing this recall campaign, and for no other purpose.

If you have any questions, please contact your District Parts and Service Manager.

HYUNDAI MOTOR AMERICA